

# C-STRIPES -188



The Flooring Solutions

*your color story*

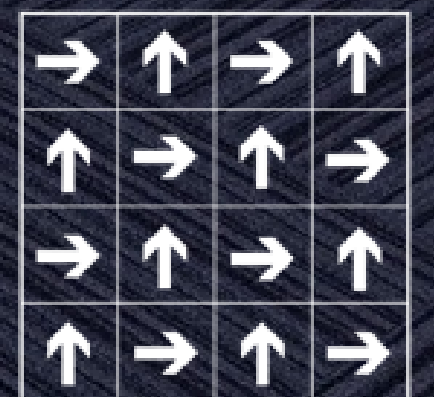
## PATTERNS

50cm x 50cm 60cm x 60cm

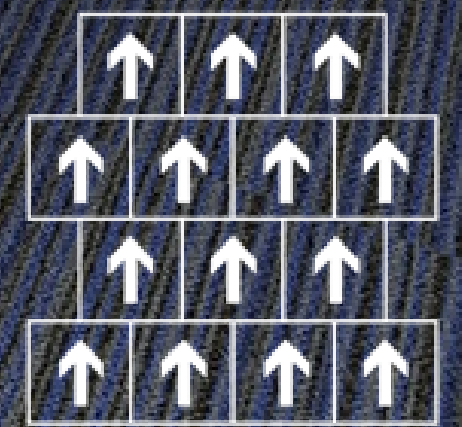
### INDEX

### PAGE

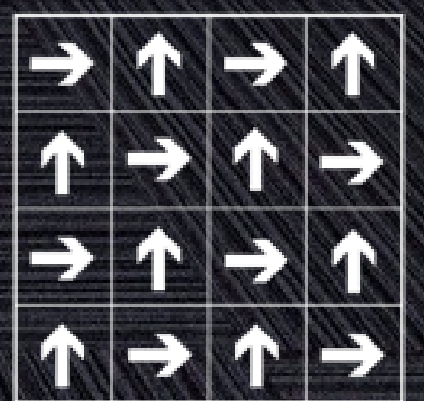
C-STRIFE 188001	2
C-STRIFE 188001	3
C-STRIFE 188003	4
C-STRIFE 188003	5
C-STRIFE 188011	6
C-STRIFE 188011	7
C-STRIFE 188013	9
C-STRIFE 188013	9
Specification	11



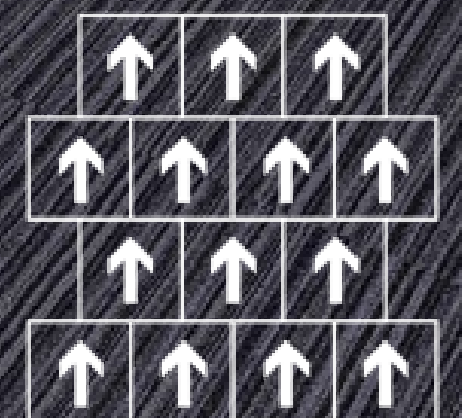
C-STRIPE 188001



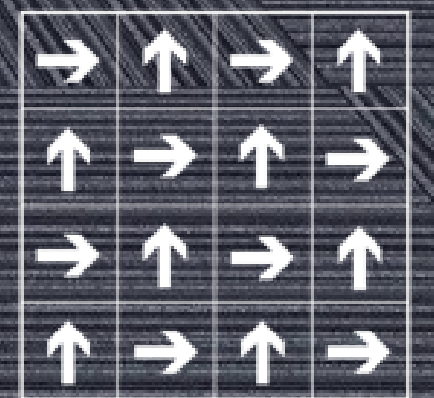
C-STRIPE 188001



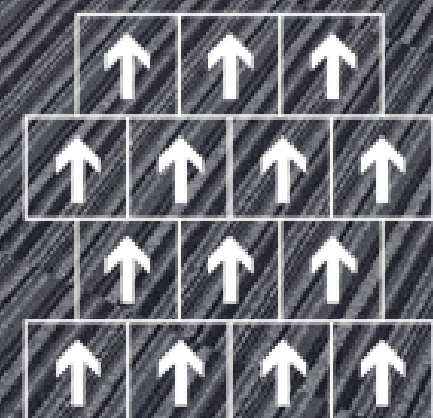
C-STRIPE 188003



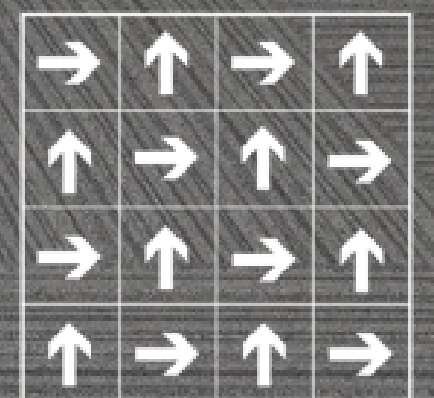
C-STRIPE 188003



C-STRIPE 188011

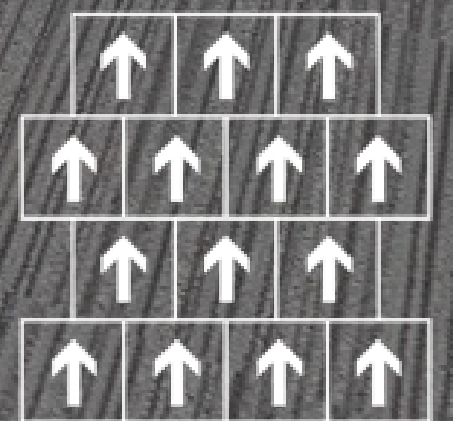


C-STRIPE 188011

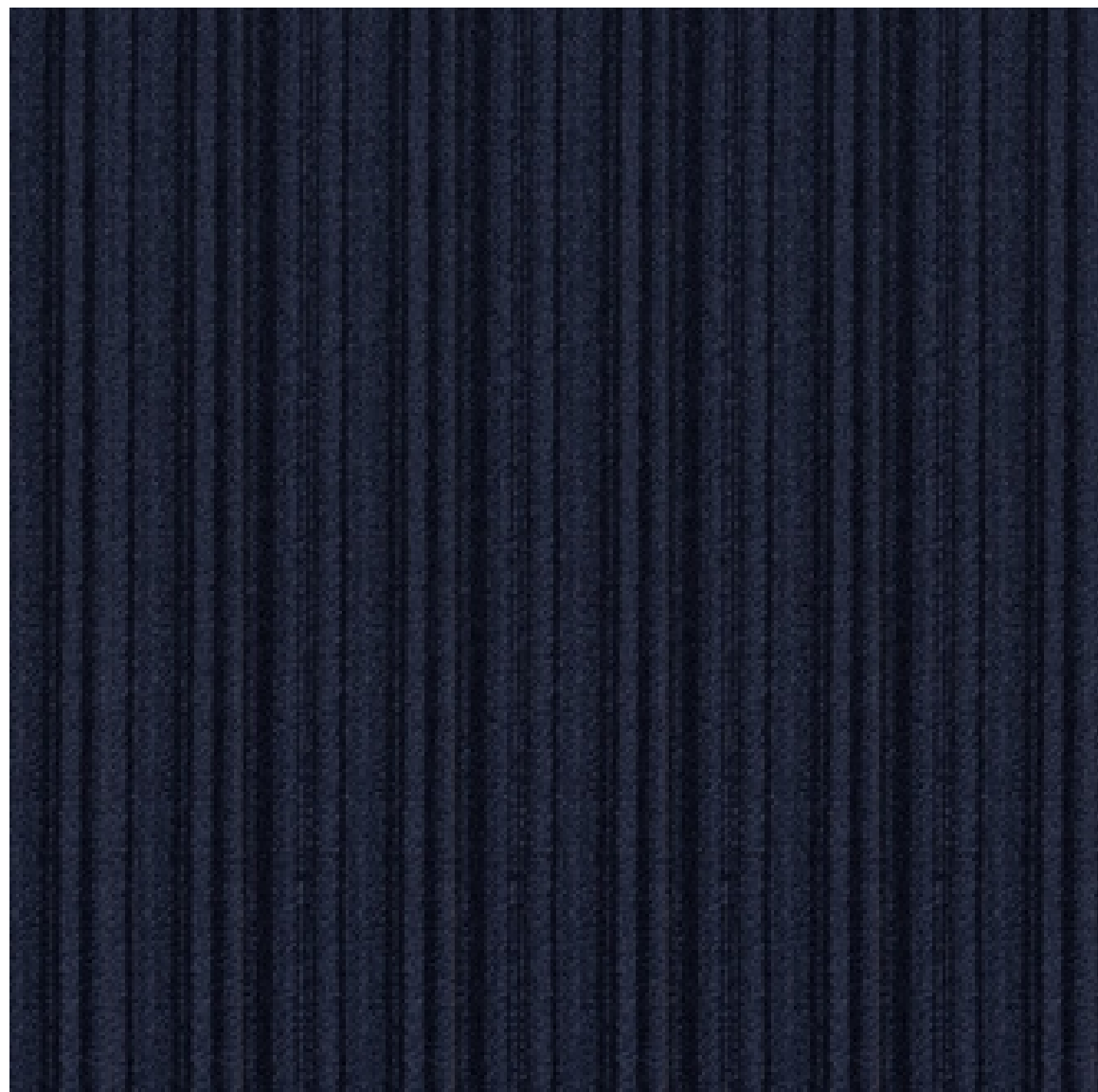


C-STRIPE 188013

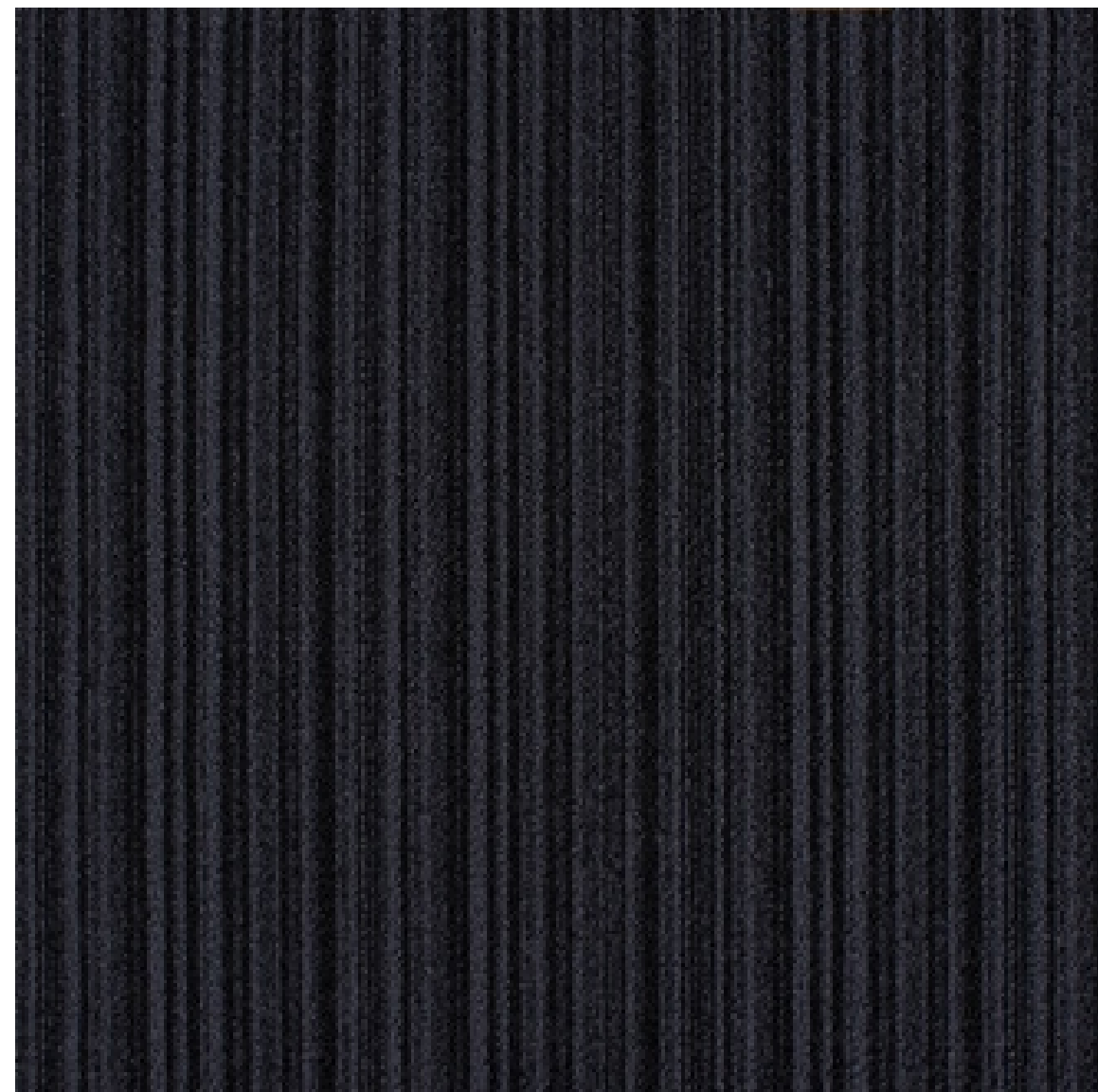




C-STRIPE 188013



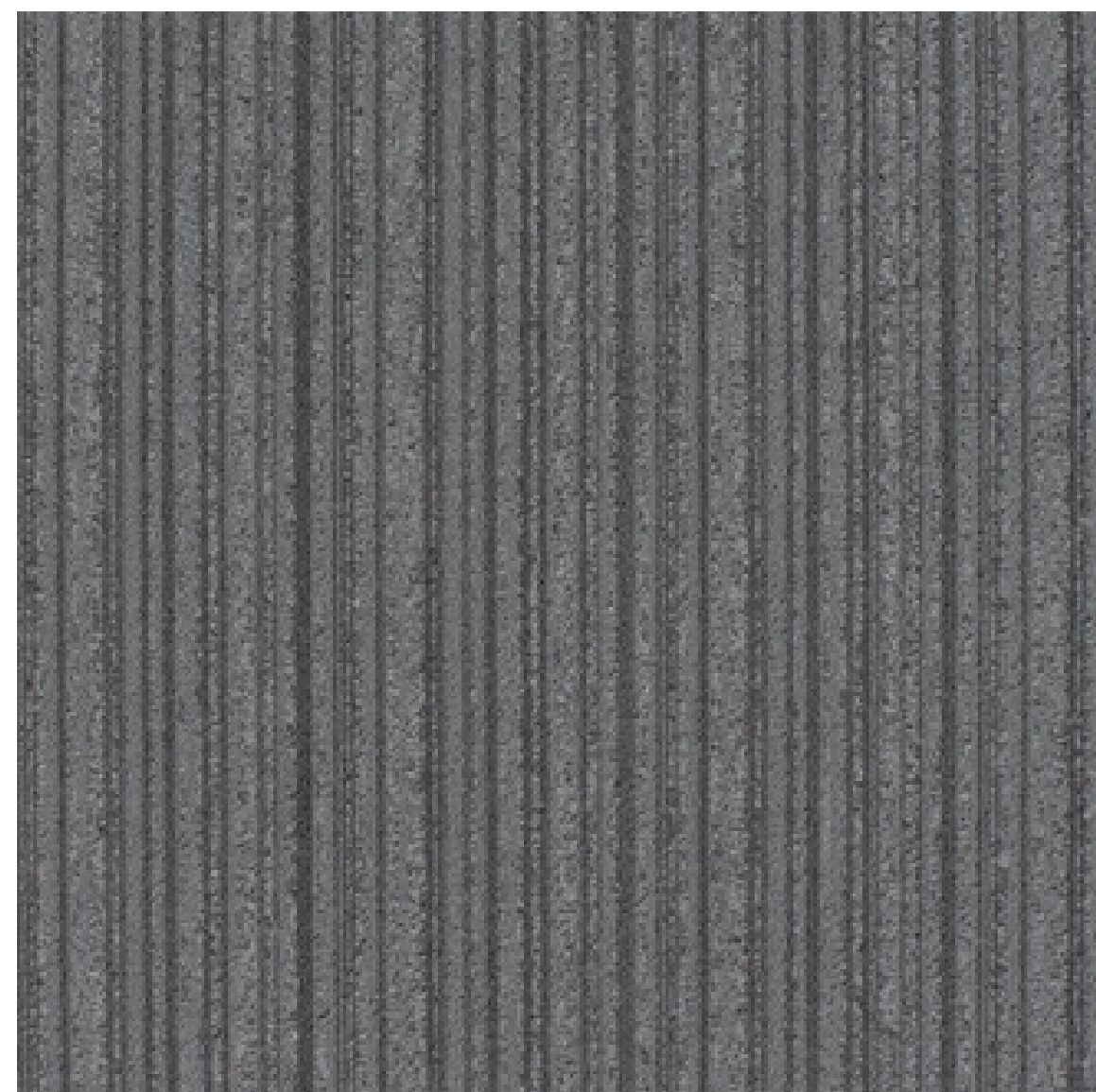
C-STRIPE 188001



C-STRIPE 188003



C-STRIPE 188011

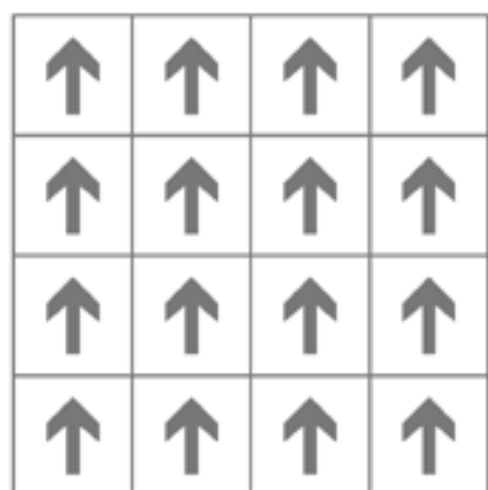


C-STRIPE 188013

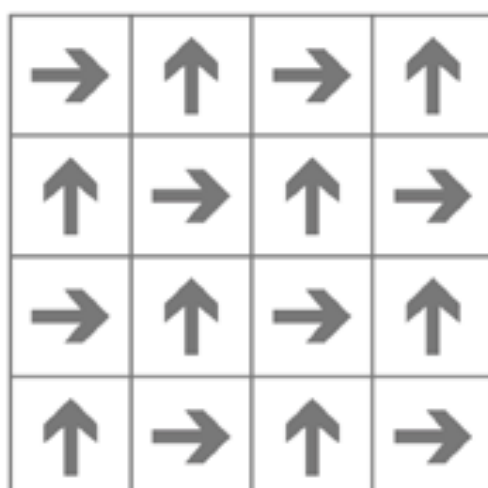
## Specification

Product Name	C-STRIFE 188
Product Code	C-STRIFE 188
Tufted construction	level Loop
Fiber	100% Nylon
Dye method	Solution Dyed
Gauge	5/64
Tufted weight(g/m <sup>2</sup> )	530±5%
Tile size(mm)	500 x 500
Pile height(mm)	3.5 ± 0.5
Total thickness(mm)	6 ± 0.5
Standard Backing	Glass fiber reinforced PVC

## Recommended installation methods



Monolithic



Quarter-Turn

